



萊英家

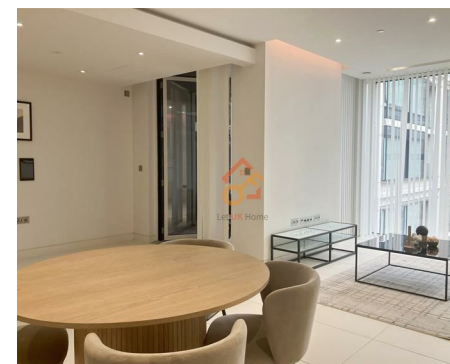
Let UK Home

2 Bedrooms

Flat

Located in London

£4,750 Per Month



info@letukhome.co.uk

<https://www.letukhome.co.uk/>

02045348146



Sugar Quay, 1 Water Lane London

EC3R 6AP



Let UK Home are excited to offer this spectacular two bedroom apartment in the heart of Landmark Place situated in City of London, EC3R.

This property comprises a large bright open plan kitchen and living room with great views, two double bedrooms with fitted wardrobes (master en-suite), a large family sized bathroom and ample storage.

Residents of this exceptional development have exclusive use of the gym, the spa, swimming pool, private cinema, sauna & steam room, and treatment room. Residents will also benefit from a 24 hour concierge and an unrivalled selection of shops, bars, restaurants, and leisure facilities.

Tower Bridge is within walking distance from the apartment, and the subway provides quick access to Liverpool Street, the City of London, Victoria Station, King's Cross, Oxford Street and more.

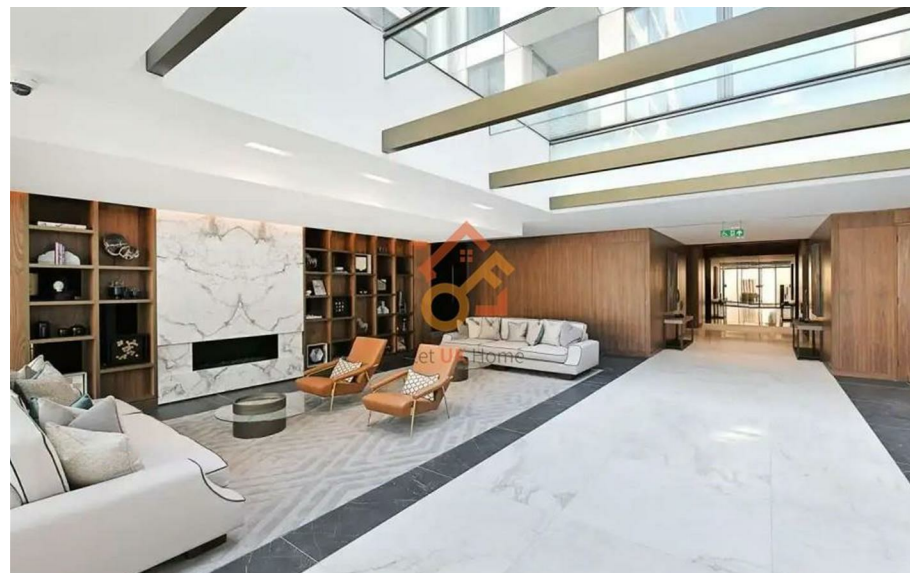
The apartment is surrounded by many universities, and the subway can reach London City University, King's College London, and London School of Economics and Political Science in a few minutes.

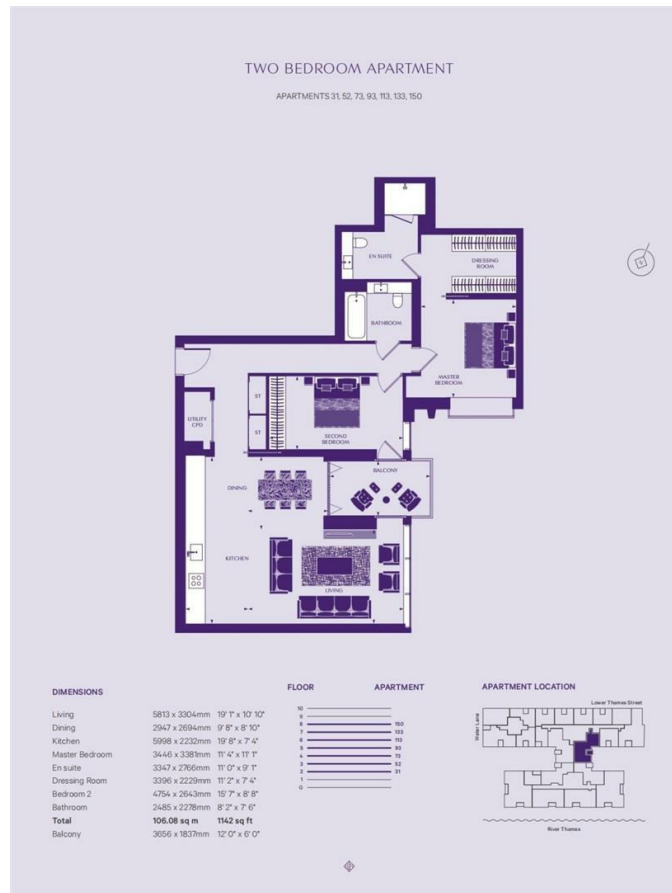
Sugar Quay, 1 Water Lane London

£4,750 Per Month



- 7th Floor
- Concierge Service
- The Spa
- Swimming Pool
- Treatment Room
- Cinema & Game Room
- 24h Security
- The Gym
- Sauna & Steam Room





萊英家
Let **UK** Home

6/F Two Kingdom Street

London

W2 6BD

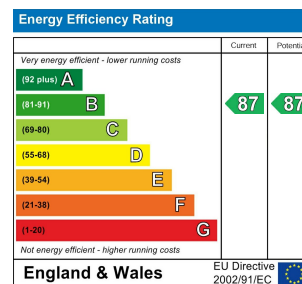
02045348146

info@letukhome.co.uk

Council Tax Band: G

Local Authority:

Agents Note: Whilst every care has been taken to prepare these particulars, they are for guidance purposes only. All measurements are approximate and are for general guidance purposes only and whilst every care has been taken to ensure their accuracy, they should not be relied upon and potential buyers/tenants are advised to recheck the measurements.



<https://www.letukhome.co.uk/>